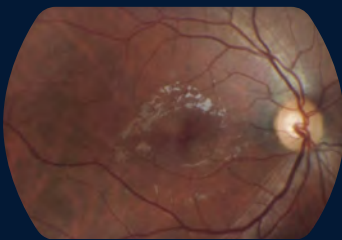
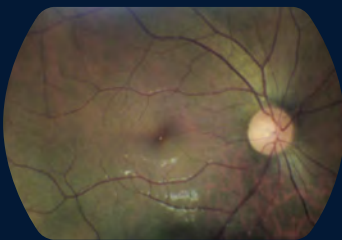


Volk VIVA™ is a **handheld, portable fundus camera** bringing accessibility to your practice while improving workflow. Designed for a variety of users from your office and worksite to the field and beyond – **VIVA** has you covered.

Seeing is **BELIEVING**

Take a look at **VIVA's** ability to image a diverse range of patients



Why VIVA?



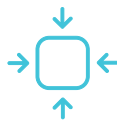
High Quality Imaging - Where You Need, When You Need

Powered by Volk Optics so you can capture sharp, clear images wherever **VIVA** takes you. This is not your standard smartphone camera; **VIVA** is designed to meet your visualization needs.



Boost Efficiency with Simplicity

VIVA's intuitive design ensures consistent imaging excellence with minimal training required. Embrace the freedom to reach more patients and streamline your workflow with ease, allowing you to focus on delivering exceptional care.



Mobility Meets Durability

Designed to be one of the most compact and lightweight non-mydratic fundus cameras on the market. Bring exam room quality imaging to your unique setting such as waiting rooms, patient rounds, nursing homes, and imaging events.



Connectivity at Your Fingertips

Add annotations and color filters to detailed reports with just a few clicks. Share reports effortlessly; enhancing efficiency in billing, consultations, and referrals.

- + Optical excellence and image quality from patented lens design
- + High performance materials for exceptional quality

YOUR VISION STARTS WITH

VOLK®

Seeing Is Believing

- + Volk brand assurance in the best visualization possible
- + Dedicated to eradicating preventable blindness through accessible imaging of the eye

VIVA™ is more than just a camera. In a world where access to eye care is often limited, **VIVA** enhances the pathway to accessibility. By empowering you to capture detailed retinal images, **VIVA** becomes your partner in protecting the gift of sight. Every patient imaged is an opportunity to transform darkness into light; because vision isn't just sight - it's life.

 **POSTERIOR POLE VISUALIZATION**

- 45° Field-of-View
- 9 fixation Targets for Peripheral Imaging



CAMERA SETTING ADJUSTMENTS FOR ALL PATIENTS

- -15 to +15 Diopter Range
- Manual or Auto Focus
- Brightness Level Adjustment

SMARTPHONE CONNECTIVITY 

- Wirelessly transfer images like any other smartphone

NON-MYDRIATIC IMAGING 

- Pupil dilation not required (minimum size 3 mm)

POWER FOR A BUSY WORKDAY 

- Rechargeable battery lasts 8 hours under normal use



Image resolution

1920 x 1080 px



Field-of-view

45°



Memory

8 GB RAM



What's Included

Eye Cup, Lens Cap, Charging Cable, Carry Case



Camera Sensor Resolution

16 MP*



Illumination

Infrared (Focusing Only), White Light (Capturing Image)



Battery Life

8 hours normal use** (5000 mAh)



File Transfer Methods

WiFi, USB, Bluetooth, Smartphone Apps, Wireless to PC

*Based on comparable market procedures, actual image is reduced from the 16MP camera sensor

** Normal use is defined as taking 4 images per patient, 4 patients per hour, and in standby mode between each patient

ML-2057 Rev. 2024-06-05

Use code VVIVA1A for ordering in the United States. Check with your regional Volk representative for ordering outside of the United States

Learn more about all of our Screening, Diagnostic, and Treatment Devices & Accessories at www.volk.com

VOLK OPTICAL INC.

7893 Enterprise Dr
Mentor, OH 44060 USA

+1 (440) 942-6161
+1 (800) 345-8655



@volkoptical



volk@volk.com



Volk Optical

